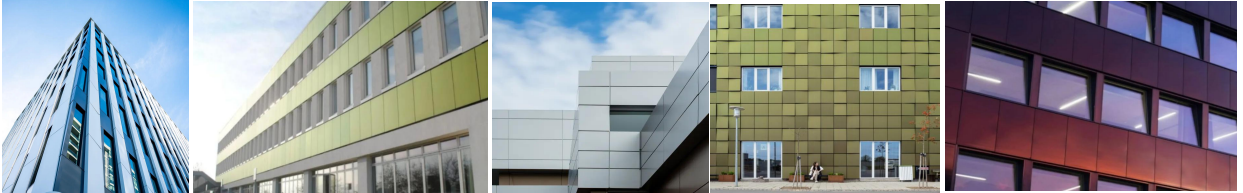


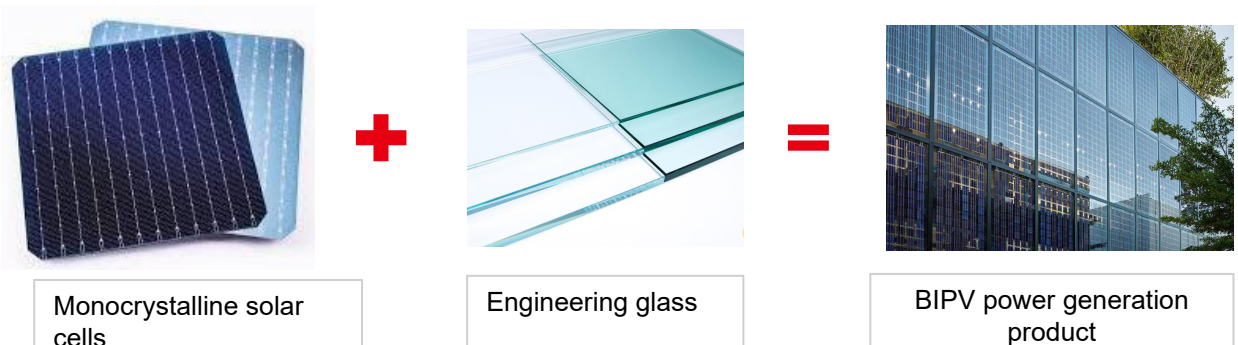
# Solar Facade

Einnova Solar Facade is a testament to the harmony of form and function. The elegance of architectural cladding meets the power of BIPVs, fusing aesthetic design, solar power, and unparalleled performance. Our innovative Solar Facade, is crafted to seamlessly replace your building's facade while harnessing the power of the sun.



## EINNOVA Monocrystalline BIPV product features:

Monocrystalline BIPV combines the power generation monocrystalline solar cells and engineering laminated glass to form a double-glass structure. The product integrates the dual advantages of monocrystalline solar energy and engineering laminated glass.



### New green building materials

It meets the requirements of building materials and has the same lifespan as the building.

### High efficiency

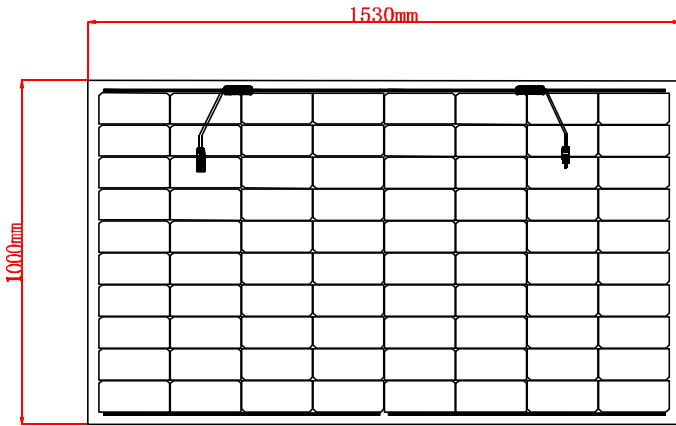
High conversion efficiency >20%, more energy-saving;

### Customizable

Color, light transmittance, size, thickness, shape etc. can be customized and adapted to the installation method of building walls to meet architectural design needs.

### Safe

Thickened tempered glass, Class A fireproof, high strength and corrosion resistance, high temperature and humidity resistance, etc., suitable for extreme weather.



## BIPV Facade Model 1



Beach Brown



Brilliant Orange



Shell White



Black



Brick Red



Light Blue



Terra Cotta



Dark Pine Green



Agate Gray



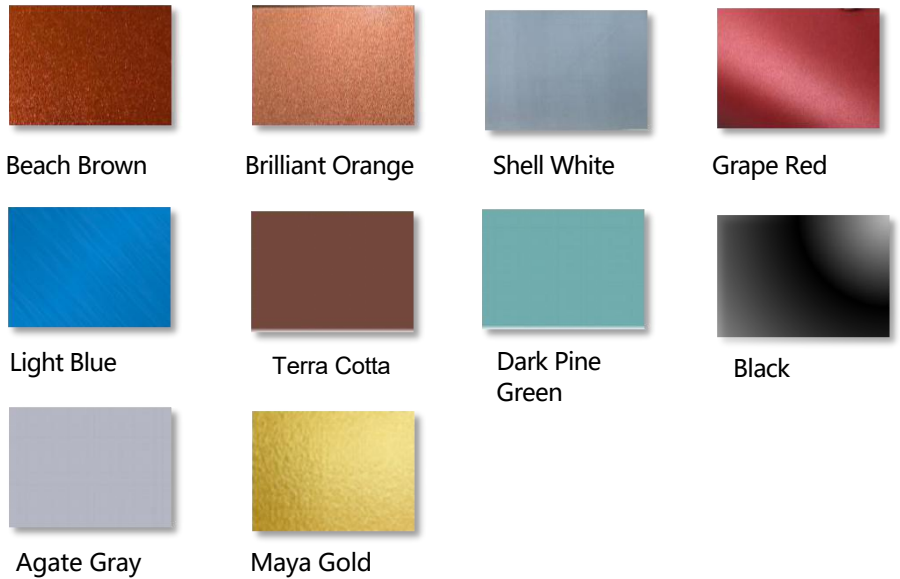
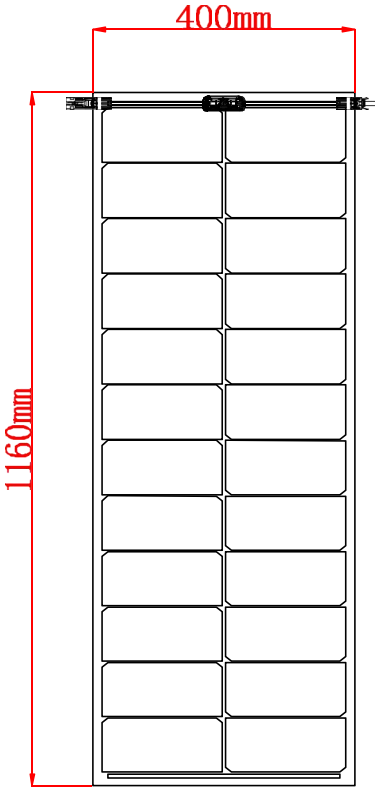
Maya Gold

### Technical Parameter under STC

Product Size	1530*1000*7.5 (mm)		
Product Color	Black	Terra Cotta	Agate Gray
Back Sheet Color	Black	Black	Black
Pmax (W)	270	215	200
Power Tolerance	±3%	±3%	±3%
Vmp(V)	21.2	20.8	19.8
Imp(A)	12.73	10.33	10.1
Voc(V)	26.8	24.2	23.6
Isc(A)	14.1	12.3	11.8
Power per m <sup>2</sup>	176	140	130
weight	26.5	26.5	26.5
Cell Coverage (%)	86	86	86
Visible Light Projection Ratio (%)	0	0	0
Outdoor Visible Light Reflection Ratio (%)	8.5	7.8	8.2

STC: Irradiance 1000W/m<sup>2</sup> Cell temperature 25°C Atmospheric quality =1.5

## BIPV Facade Model 2

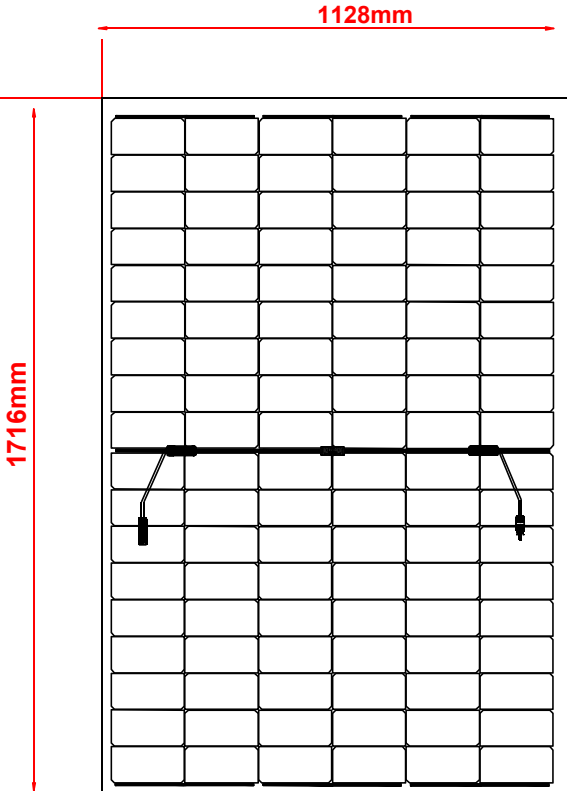


### Technical Parameter under STC

Product Size	1160*400*7.5 (mm)		
Product Color	Black	Shell White	Agate Gray
Back Sheet Color	Black	Black	Black
Pmax (W)	80	40	60
Power Tolerance	±3%	±3%	±3%
Vmp(Vmp)	12.72	10.68	11.36
Imp(Imp)	6.28	3.74	4.412
Voc(Voc)	16.08	15.12	15.82
Isc(Isc)	7.01	5.23	6.05
Power per m <sup>2</sup>	172	86	129
Weight	8.5	8.5	8.5
Cell Coverage (%)	85	85	85
Visible Light Projection Ratio (%)	0	0	0
Outdoor Visible Light Reflection Ratio (%)	8.5	9.8	8.2

STC: Irradiance 1000W/m<sup>2</sup> Cell temperature 25°C Atmospheric quality =1.5

## BIPV Facade Model 3



### Technical Parameter under STC

Product Size	1716*1128*7.5 (mm)		
Product Color	Black	Terra Cotta	Beach Brown
Back Sheet Color	Black	Black	Black
Pmax (W)	360	310	310
Power Tolerance	±3%	±3%	±3%
Vmp(Vmp)	28.62	26.23	26.23
Imp(Imp)	12.58	11.82	11.82
Voc(Voc)	36.18	34.84	34.84
Isc(Isc)	14.14	12.35	12.35
Power per m <sup>2</sup>	184	158	158
Weight	34	34	34
Cell Coverage (%)	91.5	91.5	91.5
Visible Light Projection Ratio (%)	0	0	0
Outdoor Visible Light Reflection Ratio (%)	8.5	7.8	7.2

STC: Irradiance 1000W/m<sup>2</sup> Cell temperature 25°C Atmospheric quality =1.5